

OUR MAJOR INSTALLATIONS IN KERALA

SOME FACTS WITH OUR COMPETITOR

- Largest installations in kerala
- Highest installations in Ernakulam, Calicut, Malappuram, Kottayam, Pathanamthitta, Allepey, Idukki, Palakkad, Wayanad Districts.
- Largest installation in Private Hospitals
- Largest installation in Government Hospitals
- Competative Price
- Turnkey Project experience
- Qualified Engineers



Our Major Clients



GENERAL HOSPITAL
ERNAKULAM

GOVERNMENT MEDICAL COLLEGE
ERNAKULAM

GENERAL HOSPITAL
TRIVANDRUM

THQ PONNANI

DISTRICT HOSPITAL
PALAKKAD

THQ TIRUR

DISTRICT HOSPITAL
TIRURANGADI

THQ NILAMBUR

EMS Hospital
Perinthalmanna

Al Shifa Hospital
Perinthalmanna



Email: enquiry@meditechcorp.com | Ph: +91-7736811769
Web : www.meditechcorp.com



Specialized Dialysis Company

Best water for Best treatment



AAMI STANDARD NEPH RO PLANT

Water treatment systems used in dialysis are a critical factor in the overall care received by dialysis patients; they also provide one of the greatest hazards to the patients if they are not functioning properly!

Our Neph – RO- Series reverse osmosis water purification for 100 to 10,000 LPH applications. Meditech Corporation developed a comprehensive system for Nephro water treatment system. The neph-RO- series RO designed and tested to meet AAMI requirements for product water.

FULLY AUTOMATED RO PLANT

Excellent water purification

A Comprehensive Fully Automated Dia Safe Series RO water treatment plants exclusively designed for Dialysis treatment As per AAMI Standards. The system minimizes the end-user daily activity and negligence of operator issues. The system will maintain automatic backwash, rinse & Re-generation of softener units hence the performance of RO Plant will be more efficient and accurate, which will increase membrane life.



PORTABLE RO PLANT

Pure water at your fingertips

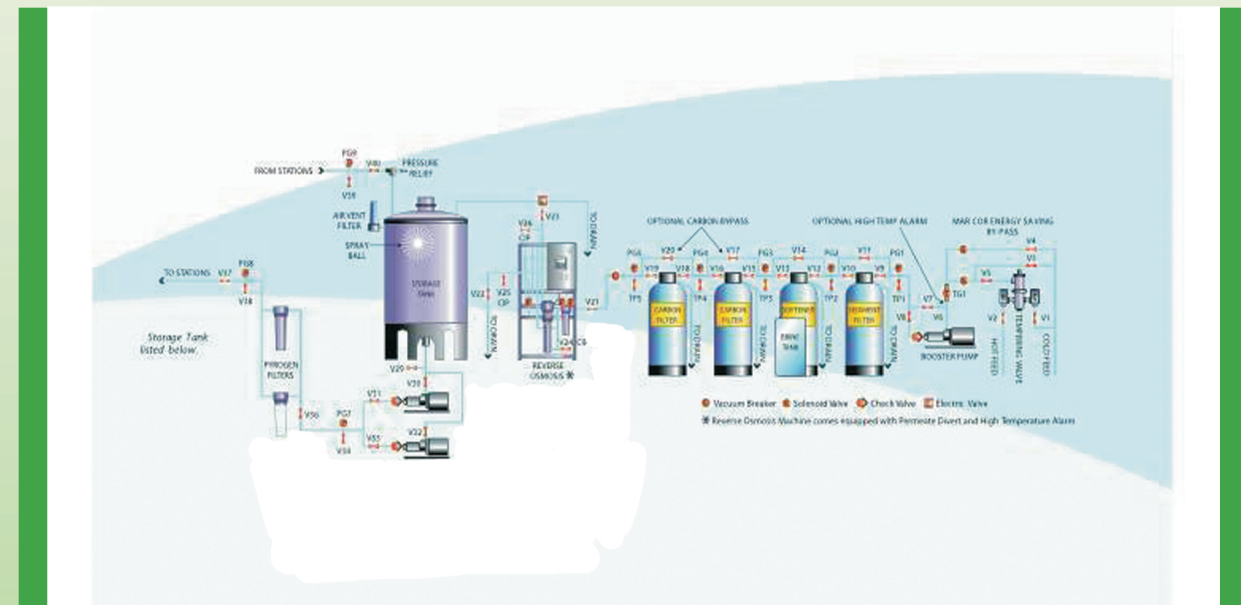
Rena Pure series Portable RO system is a complete reverse osmosis water treatment system designed to operate for two machines with a treated water tank. The complete system is housed within a compact sound proofed frame providing quiet operation and portability.

System Features

- 100 LPH RO system with TAM technology *
- UV unit for against microbiological growth
- Activated Granulated filter x 2 No's
- Spun filter
- 300GPD pump for RO Water feed
- Automatic cut off Re-start system
- TDS/Conductivity monitor
- Storage tank 100 liter capacity
- Medical grade Stainless steel cabinet



meditech NEPH RO SCHEMATIC DIAGRAM



Standard & Special features

- Advanced performance monitoring includes digital display of (TDS, Conductivity, & Pump current, low inlet pressure, motor starter overload)
- Fully Automated System including Back wash, Rinse & Regeneration
- Pre-filters - 4- No's (1. Dual media Sand, 2. Pre Activated Carbon filter 3, Post Activated Carbon filter/Iron Remover, 4. Water Softner Unit)
- Quiet stainless steel pump
- Full-fit thin film RO membranes (USA)
- Stainless Steel membrane Housing (Imported)
- Square flow meters for concentrate, Permeate & Reject flow (Imported)
- Glycerin filled pressure gauges
- Auto flush control
- Auto TDS Control (Optional)
- By pass facility for Control panel, Filter, UV and Pumps
- Automatic cut off and re-start system
- Pressure & Air relief valve*
- Anti-scaling
- Dosing Unit for PH*
- UV Unit
- Pyrogen trap filter (0.2 & 0.1 micron)
- Custom design
- Low inlet pressure switch
- Stainless Steel Permeate Boosting pumps with stand by motors
- Raw Water feed Pump Including Stand by motor
- Stainless Steel Frames (304grade)
- Dosing for microbiological purity*
- Dosing for PH maintain*
- SS Storage Tank (Optional)